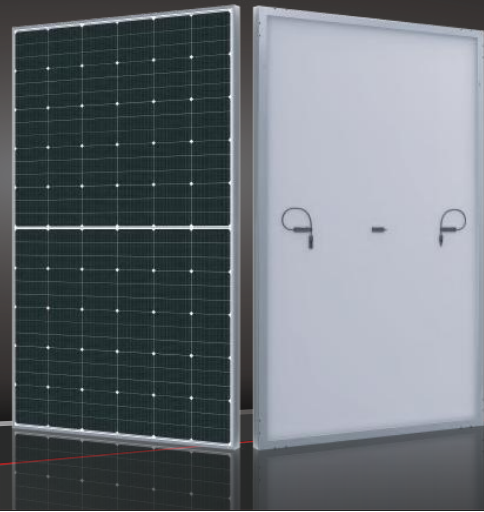


RT-455-470-TM60-HV

RAYSTECH

RAYSTECH
Monocrystalline Series
455-470W



Products Characteristics

- Less mismatch to get more power
- Less power loss by minimizing the shading impact
- Competitive low light performance
- 3 times EL test to ensure best quality
- Ideal choice for utility and commercial scale projects by reduced BoS and improved ROI
- Outstanding reliability proven by PVEL for stringent environment condition:
 - Sand, acid, salt, and hail stones
 - 2400 Pa wind load and 5400 Pa snow load
 - Anti-PID

15 YEARS Guarantee on product material and workmanship

25 YEARS Linear power output warranty



Electrical Characteristics

| Module Type | RT-455-TM60-HV | | RT-460-TM60-HV | | RT-465-TM60-HV | | RT-470-TM60-HV | |
|------------------------------|----------------|-------|----------------|-------|----------------|-------|----------------|-------|
| | STC | NOCT | STC | NOCT | STC | NOCT | STC | NOCT |
| Maximum Power at STC (Pmp) | 455 | 341 | 460 | 345 | 465 | 349 | 470 | 353 |
| Open Circuit Voltage (Voc) | 61.64 | 57.33 | 61.84 | 57.51 | 62.04 | 57.70 | 62.24 | 57.88 |
| Short Circuit Current (Isc) | 9.28 | 7.42 | 9.39 | 7.51 | 9.49 | 7.59 | 9.59 | 7.67 |
| Maximum Power Voltage (Vmp) | 51.92 | 48.29 | 52.02 | 48.38 | 52.12 | 48.47 | 52.22 | 48.56 |
| Maximum Power Current (Imp) | 8.79 | 7.03 | 8.89 | 7.11 | 8.99 | 7.19 | 9.09 | 7.27 |
| Module Efficiency at STC(ηm) | 21.16 | | 21.39 | | 21.63 | | 21.86 | |
| Power Tolerance | (0, +4.99) | | | | | | | |
| Maximum System Voltage | 1500V DC | | | | | | | |
| Maximum Series Fuse Rating | 25 A | | | | | | | |

STC: Irradiance 1000 W/m² module temperature 25°C AM=1.5
Power measurement tolerance: +/-3%

Temperature Characteristics

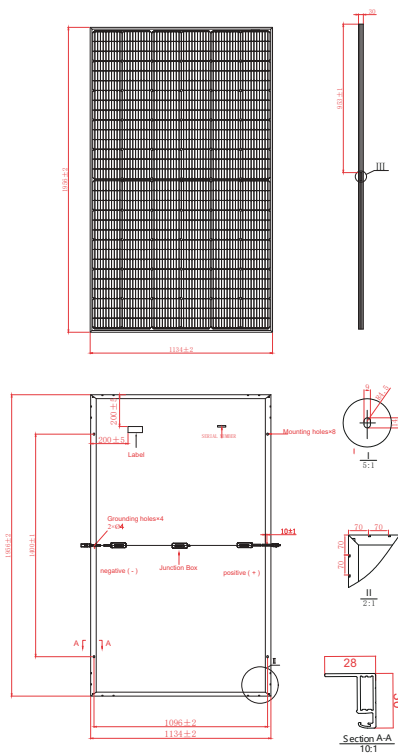
| | |
|---|-----------|
| Pmax Temperature Coefficient | -0.34%/°C |
| Voc Temperature Coefficient | -0.26%/°C |
| Isc Temperature Coefficient | +0.05%/°C |
| Operating Temperature | -40~+85°C |
| Nominal Operating Cell Temperature (NOCT) | 45±2°C |

Mechanical Specifications

| | |
|---------------------|---|
| External Dimensions | 1956 x 1134 x 30 mm |
| Weight | 22.7kg |
| Solar Cells | PERC Mono(180 pcs) |
| Front Glass | 3.2 mm AR coating tempered glass, low iron |
| Frame | Anodized aluminium alloy |
| Junction Box | IP68, 3 diodes |
| Output Cable | 4mm ² , 250mm(+)/350mm(-) or Customized Length |
| Mechanical Load | Front side 5400Pa/ Back side 2400Pa |

Packing Configuration

| | |
|-----------------------|-------|
| Container | 40'HQ |
| Pieces per Pallet | 36 |
| Pallets per Container | 22 |
| Pieces per Container | 792 |



I-V Curve

